

The long view

Stepping out of their comfort zone, one couple turned a chance discovery on the Mornington Peninsula into their forever family home.

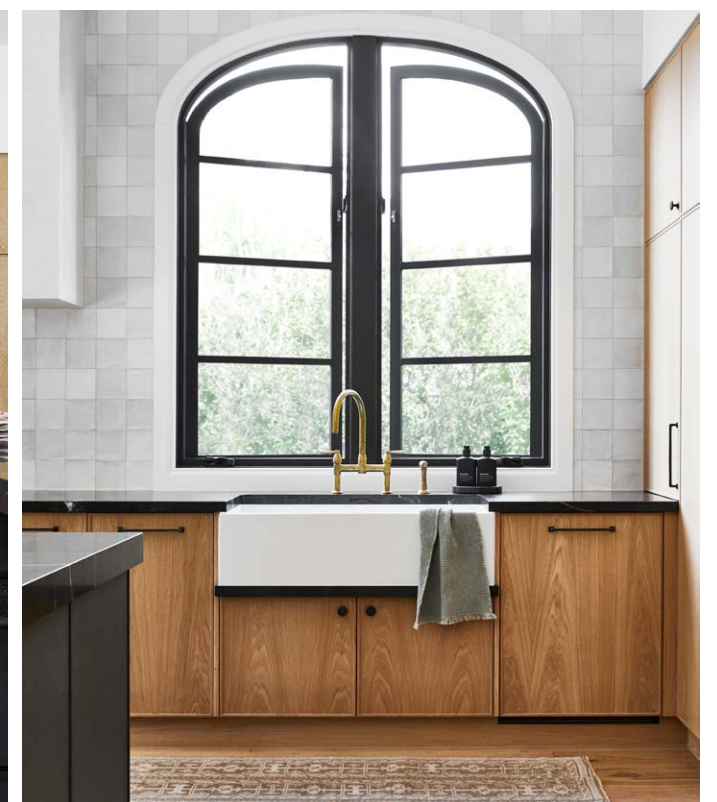
STORY *Carli Philips* | STYLING *Julia Green & Aisha Chaudhry* | PHOTOGRAPHY *Armelle Habib*

Stylist's assistants Jessica Retalack and Cassandra Dillon.

BACKYARD Landscaped by Plume Studio, the vast outdoor area tiers to an upper lawn and pool area with sauna. The paving is aged limestone. Fireplace, Jetmaster. Montego three-seater sofa covered in Sunbrella fabric and Livorno 'Curve' coffee table, both Globe West. Exterior painted in Dulux Black Caviar with Colorbond Monument roof and trims.

In 2017, Steve Cahill, co-owner of Cahill Building Group, wandered into an auction that was already in progress. He hadn't been to the open house, but suddenly found himself raising his hand. "Half an hour later, I was signing a contract for the house, sight unseen. It was more money than my wife Lucy and I had ever spent but we had wanted to live in this area, Beleura Hill [on Victoria's Mornington Peninsula], for years and I had a good feeling about it."

At the time, Steve and Lucy were parents to one son, Hunter, now five. Their plan was to live in the house for a while then rebuild, but with the arrival of Huxley, three, it took until July 2019 for the project to get underway. Baby Fleur joined the family in October 2020, just in time for completion. ▶



KITCHEN/DINING Lucy and Steve with baby Fleur, sons Huxley and Hunter, and the family's mini schnauzer Snitzel. Infinity dark-green granite on benchtops, Gladstones Granite & Marble. Engineered European oak floor. Capital lantern, The Montauk Lighting Co. Zellige 'Bianco' ceramic tiles on rear wall, KWD & Co. Olivia stools, Globe West. Acquello sink and Perrin & Rowe 'lo' mixer taps, The English Tapware Company. Windows, 3D Windows. Oak-veneer joinery, Farmers Doors. Oven, Ilve. Pot on stove, Le Creuset. Clear vase, Peony & Weasel Flower Co. Joinery hardware, Domino Brass Fittings. For similar vintage runner, try Love Moroccan Rugs. Vessels on dining table by Simone Karras.



“WE WANTED AN ENVIRONMENT THAT WAS BEAUTIFUL TO BE IN, SOMEWHERE WITH WARMTH AND SOUL.”

Steve Cahill, owner

KITCHEN/DINING A cathedral-style ceiling and elegant custom steel doors and windows help imbue the kitchen with glorious sense of space, the light having a shimmering effect on the handmade wall tiles by KWD & Co. Windows, 3D Windows. Pedro dining chairs, Globe West. Paxton dining table, Schots Home Emporium. ▶

THE PALETTE

Dulux Kimberley Tree (nursery)	Porter's Paints Jeep (main bedroom, ensuite joinery)	Dulux Black Pearl (exterior)
--------------------------------------	---	------------------------------------



LIVING Custom swivel chairs in Mulberry Home linen by Sorrento Furniture, which also made all the cushions. Sofa, Coastal Living. Houghton coffee table, Boyd Blue, with *Femme #5* vessel with flowers, Makers' Mrkt, and Alice Bell ceramics, Greenhouse Interiors. Turnstall sisal rug, KWD & Co. Sandton faux shagreen side table and *Seaweed Specimens IV* artwork, Boyd Blue. Boston double-arm wall light, The Montauk Lighting Co. Curtains in Mokum linen, Lynch's Window Fashions. **DINING** Paxton vintage elm dining table, Schots Home Emporium. Raku vessel by Simone Karras. Pedro dining chairs, Globe West. Ralph Lauren Home 'Roark' chandelier, The Montauk Lighting Co.

Paint colours are reproduced as accurately as printing processes allow.

The couple had always lived in modern townhouses that Steve admits were quite clinical. For this family home, they sought something completely different. “We wanted to create an environment that was beautiful to look at and to be in, somewhere with warmth and soul,” he explains.

Steve and Lucy had seen the work of Mount Martha-based designer Kate Walker of KWD & Co on Instagram and engaged her to help with the transformation. Kate inherited the shell of the house with its plain, basic interiors and set about adjusting the spatial planning, material touchpoints, palette and hard finishes.

Inspired by a sophisticated European farmhouse aesthetic, she created detailed wainscoting with weathered floors and aged limestone. “So many clients have constraints but Steve and Lucy gave us carte blanche,” says Kate. “They took a leap of faith to engage us and we appreciated their mindset which is also ours: spend and invest now because it will definitely pay off. They spared no expense with finishes and they just trusted us. And in our profession, that’s really important because it gets the best result.” ▶

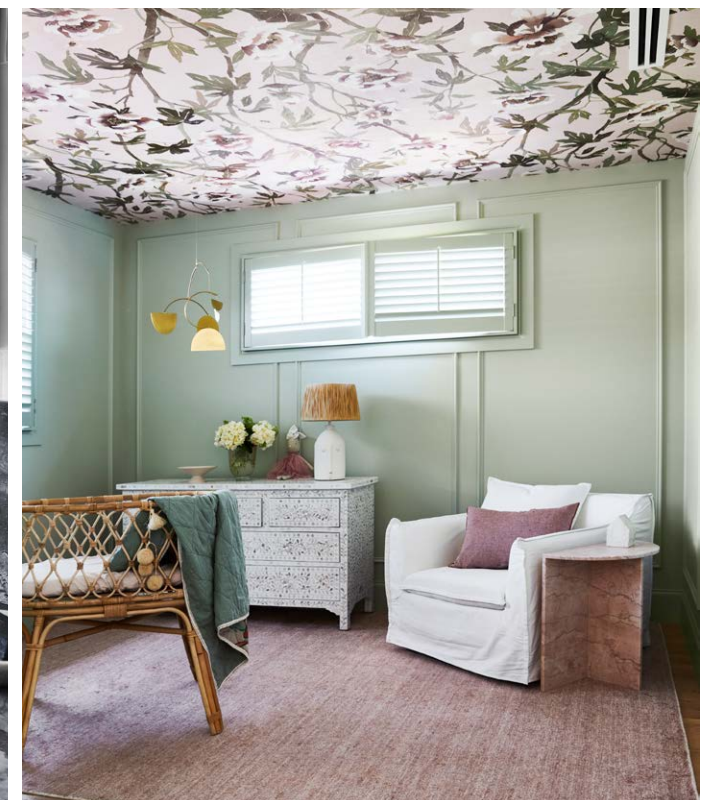


THIS IS THE LIFE

Steve and Lucy's life here on the Mornington Peninsula is intrinsically linked with the outdoors. The family live just a five-minute walk from the beach, and the house includes a generous garden that is seamlessly connected to the living area, an outdoor kitchen and a pergola with fireplace that ensures they can enjoy alfresco dining year round. But if the five-minute walk is too much, they can head upstairs to enjoy the view.

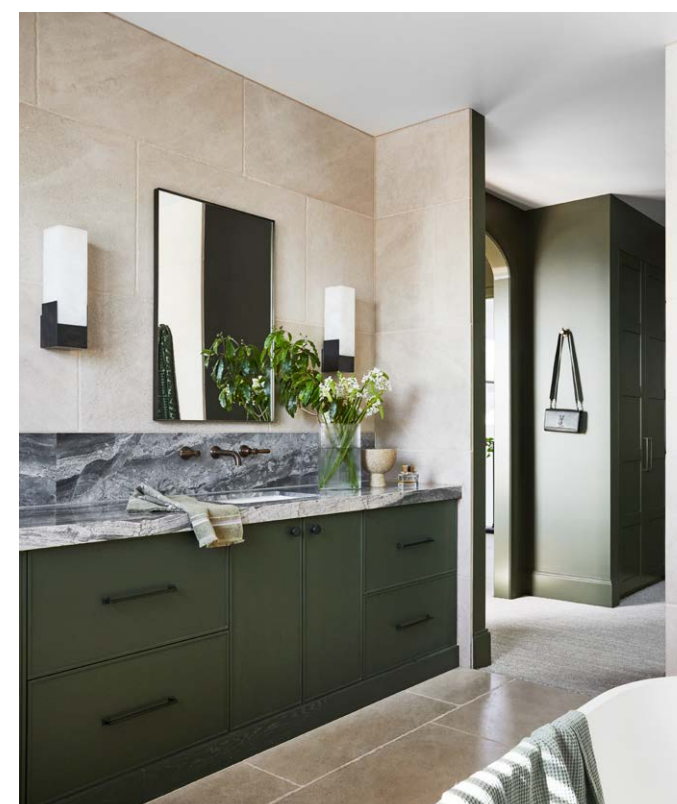
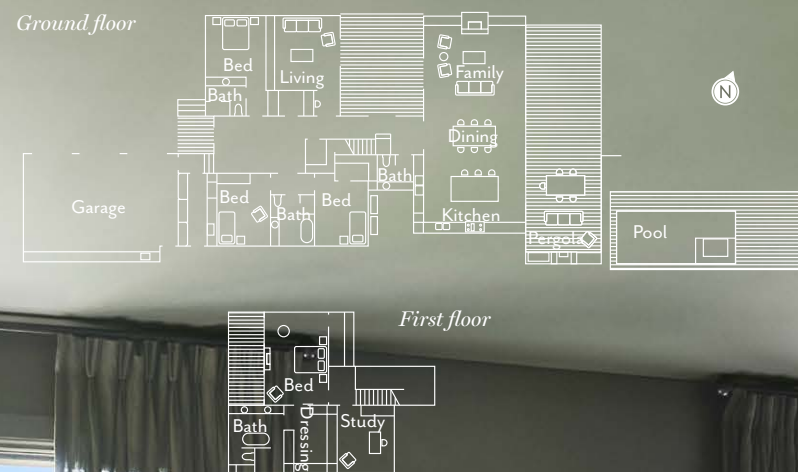
*"SO MANY
CLIENTS HAVE
CONSTRAINTS
BUT STEVE AND
LUCY GAVE US
CARTE BLANCHE."*

Kate Walker, interior designer



CHILD'S BEDROOM Steve built the bed himself. Rocking chair, Ikea. Mokum curtains, Lynch's Window Fashions. Alhambra 'Coolbaby' wallpaper, Binnichi. **FAMILY BATHROOM** Nero bath, Hardings Hardware. Architectura basin, Villeroy & Boch. City Plus 'Manhattan' tapware, Brodware. Liaison sconce, The Montauk Lighting Co. **NURSERY** Mokum 'Peonia' wallpaper (on ceiling). Belle bassinet, Sacred Bundle. Cot quilt, Greenhouse Interiors. Chest, Mahlia Interiors. Montauk armchair, Hope & May. Mobile, Juno and Ace. **GUEST ENSUITE** Metallicus quartzite benchtop, Gladstones Granite & Marble. Handles, Domino Brass Fittings. Bryant sconce, The Montauk Lighting Co. **STUDY NOOK** Light, Ikea. Timber seat, Globe West. ►

THE LAYOUT



MAIN BEDROOM *Top and opposite* Bedhead and armchair upholstered in Mulberry Home 'Wild Geese', both Sorrento Furniture. Throw, Coastal Living. Cushions, Tigger Hall Design. Zenn ottoman, Greenhouse Interiors. Hawa mirror, artworks and Fjord bedside tables, all Boyd Blue. Bryant sconce, The Montauk Lighting Co. Carpet, KWD & Co. Shutters, Lynch's Window Fashions. **WALK-IN WARDROBE** Ottoman upholstered in Marco Fabrics 'Romo', Sorrento Furniture. **MAIN ENSUITE** Walls and floor aged limestone, KWD & Co. Metalicus quartzite benchtop, Gladstones Granite & Marble. Handles, Domino Brass Fittings. Architectura basin, Villeroy & Boch. Covet sconces, The Montauk Lighting Co. Harvard wall mirror, Luxe Mirrors. Nero bath, Hardings Hardware. City Plus 'Manhattan' tapware, Brodware. Hand towel, Købn. ►



PERGOLA Byron outdoor slatted dining table, Montego three-seater sofa and orange butterfly-style chairs, all Globe West. Dining chairs, Kmart. **FRONT ENTRANCE** The grounds were landscaped by Plume Studio. Aged limestone external paving. Exterior painted in Dulux Black Pearl with roof, gutters and downpipes in Colorbond Monument. *For Where to Buy, see page 192.*

The house is designed so that the family can enter through the garage and a sensible mudroom. The more formal entrance opens into a grand foyer. To the right of this foyer are the boys' bedrooms, which are separated by a shared bathroom. To the left is a guestroom and, via a small study nook walkway, is a play room for the children. Through a narrow, double-storey light-filled void and past the staircase with a powder room tucked neatly underneath, the house opens up into a massive kitchen, dining and family zone.

Steve says Lucy would have been happy with a single-storey house but the sea views higher up were just too good not to maximise. "We had paid for the view and I thought it would have been a waste to have the kids upstairs. So we decided to put the master bedroom up there. It's amazing - you can see straight down the beach to the pier. We also have a nice westerly aspect over Port Phillip Bay and get some

amazing sunsets." While the original plan was to have a study up here too, they found out Lucy was pregnant with baby number three part of the way through the interiors process so it was changed to a nursery.

Furnishing the house came very late in the process and Steve says he and Lucy spent three months of their lives and every waking moment buying all new pieces - with a little advice from Kate along the way.

"It was very stressful and we had to make quite a few decisions on the fly because we were on such a tight deadline," says Steve. "We'd moved with a baby before and really didn't

"NOW WE HAVE THE DREAM HOME AND THREE KIDS, WE'RE HAPPY TO JUST ENJOY WHAT WE'VE ACHIEVED."

Steve Cahill, owner

want to do it again. Now that we have the dream home and three kids, we're happy for things to slow down a bit and just enjoy what we have achieved."

H&G

KWD & Co, Mount Martha, Victoria; (03) 5974 1800 or kwdandco.com.au. Cahill Building Group, Mornington, Victoria; cahillbg.com.au.

