



TRUE ROMANCE

With its lakehouse aesthetic and sprawling design, this luxe weekender in Mount Martha enjoys its own fairytale ending.

STORY *Stephanie Hope* | STYLING *Julia Green* | PHOTOGRAPHY *Armelle Habib*

PORCH Recycled bricks painted Dulux Natural White, recycled-slate roof and copper guttering and downpipes. Avaris limestone pavers and Montrose exterior wall sconces, KWD & Co. Porthole window and front door painted Dulux Happy Days. **KITCHEN** Interior designer Kate Walker. Custom joinery in Dulux Deepest Water. Zellige Bianco tiles, KWD & Co. Monte Carlo pendant lights, Emac & Lawton.



“We wanted to bring a real sense of romance to the home to give it broad appeal.” KATE WALKER, INTERIOR DESIGNER



There's an unforeseen challenge that comes with designing a home that stands out from the crowd: council may not always be on board with your vision.

This was the reality that builder Steven Cahill of Cahill Building Group faced in the planning stages for this luxury new build in the coastal Victoria town of Mount Martha. "The pushback from council was a big surprise, considering the extent to which our design was both an improvement

and a reduction in building mass from the original plans that came as part of the sale," he says. "It took almost 12 months to get approval."

Thankfully, sense (and persistence) eventually prevailed, and Steven and his team were able to move forward with their concept for a sprawling two-storey dwelling with a beautiful lakehouse aesthetic. And - spoiler alert - they received the ultimate validation when the home was snapped up within three weeks of being put on the market. ▶



LIVING ROOM Sofa: Lounge Lovers, White-cushioned armchairs: Tribos Bay Living, Armchair near window: Canvas+Sasson, Vintage Persian Tabriz rug: Cadrya, Oly coffee table: Coco Republic, Marble side table: GlobeWest, Cream stool: Amalli, Rexington Home stool: Temple & Webster, Sable chandelier: The Montauk Lighting Co, Seis Belle 5.3 artwork by Annette Vandendael (above fireplace) and Limpopo artwork by Ray Sanderson (between glass doors), Studio Gallery.

Driving up to the home and through the traditional farm-style gates, visitors are met by a cheerful blue front door and inviting entryway. "The site had previously been cleared with the exception of a strange little brick outbuilding with a slate roof," says Steven. "We used the slate for the new porch; it adds character and a link to the old home."

Inside, a central foyer offers an instant view and access to the backyard, where an entertainer's deck, lawn and luxury pool await. To its left, a cosy den is an intimate space complete with open fire, bar and beer and wine fridges, while the adjoining main bedroom suite revels in its sunlit position overlooking the pool. The right side of the home is reserved for the open-plan kitchen, dining and family living spaces, as well as a mudroom - essential for country living. There are more bedrooms upstairs, including a bunk room that sleeps four.

With the initial concepts locked in, Steven enlisted interior designer Kate Walker, who he'd worked with on his own home, to oversee the extra details. The brief? A home that referenced the seaside location while standing out from the mass of white weatherboard houses in the area.

"We wanted to bring a sense of romance to the home for broad appeal," says Kate, who landed on a 'lakehouse' look that blends Hamptons style with modern farmhouse elements. "It's a highly detailed style, highlighted with V-groove panelling and lots of different tile patterns and textural elements - all in the colours of the coast: sand and shades of blue." ▶

KITCHEN Bridgeport engineered-oak flooring and Carrara marble benchtops, KWD & Co. Custom island designed by KWD, made by Farmers Doors. Door hardware, Domino. Perrin & Rowe tapware, The English Tapware Company. Palecek 'Capitola' counter stools, Boyd Blue. Terracotta vase, Solis terracotta bowl and Mesa green ceramic jar, all Pottery Barn.

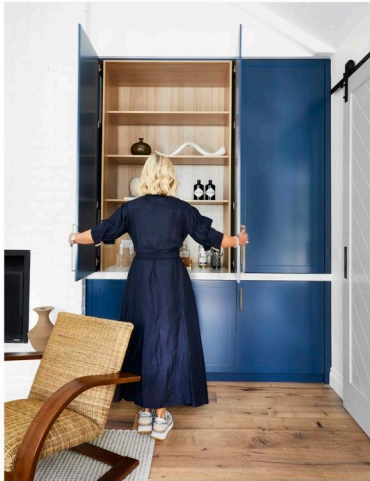


**THIS IS
THE LIFE**

"This property ticks all the boxes," says Steven. "Close to the beach, shops, restaurants, parks and local primary school, it's still a nice quiet spot." The interiors enhance that sense of being away from it all, which the new owners love. "The hard finishes and bespoke joinery add a sense of understated luxury to create a comfortable and relaxed feeling in every room," Kate adds.



DEN *This image and below* Lennox sofa, Coco Republic. Chairs, LE Interiors. Rug, Bayliss. Floor lamp, Ishka. Custom joinery in Dulux Deepest Water lined with Polytec laminate in Natural Oak. **STAIRS** *Right* Nantucket stair runner, KWD & Co. Basil ceiling light, The Montauk Lighting Co. Russes wall lights, The Society Inc. Table and sculpture, Boyd Blue. **BATHROOM** *Opposite* Shiplap walls in Dulux Mt Aspiring. Casablanca floor tiles in Cloud and Sea Blue, KWD & Co. Custom joinery in Dulux Sailing Safari. Hugi freestanding bath, Stonebaths. Oxford Bath sconces, The Montauk Lighting Co.



She started outside, painting the side gate, front door, shutters and window trims Dulux Happy Days to pop against the white board-and-batten exterior. Crossing the threshold, hand-brushed engineered European oak floors lay the foundation for fresh, white walls, Carrara marble benchtops and shiplap panelling, with textured tiles and brass light fixtures "adding the jewellery", says Kate.

The kitchen is an inviting space thanks to its dusty-blue glass-fronted cabinetry, iridescent tiles on the splashback and a trio of cone-shaped pendant lights. "It has all the bells and whistles," says Steven.

Premium wool carpets, cosy window nooks and soft fabric window shades continue the sense of luxury and romance in the bedrooms, giving the home personality with a hint of nostalgia. "The porthole windows in the bunkroom would have to be one of my favourite features of the house," says Steven. "One window has an incredible sunset view over the bay in ►

“The lakehouse look blends Hamptons style with modern farmhouse elements. It’s highly detailed and textural, with all the colours of the coast.” KATE WALKER



THE PALETTE

Dulux Happy Days (front door,
side gate, external window trims)

Dulux Mt Aspiring (interior walls)

Dulux Deepest Water
(kitchen and den joinery)





BATHROOM *Left and below right* Jumbo Carrara herringbone mosaic floor tiles, KWD & Co. Custom joinery in Dulux Terrace White. Tapware, Astra Walker. Katie Cylinder sconces, The Montauk Lighting Co. **MAIN BEDROOM** *This image* Bed, Coco Republic. Bedlinen, L&M Home and Sheet Society. Throw, St Albans Textiles. Side table, Halverson Interiors. Table lamp, Canvas+Sasson. Bench seat, GlobeWest. **WARDROBE** *Below left* Custom shaker profile joinery in Dulux Terrace White. Hardware, Hepburn Hardware. Brentwood carpet, KWD & Co. **BEDROOM** *Opposite* Bedlinen, Palace on Street and Pottery Barn. Stools, Etsy. Chair, Coco Republic. Table lamp, Canvas+Sasson. Seaman wall light, Emac & Lawton. ▶



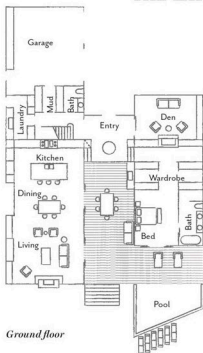
“The result is a really amazing home that will provide many years of happiness to the new owners.” STEVEN CAHILL, BUILDER





STREET ENTRANCE Two gates from Red Hill Country Gates open to reveal the stunning board and batten home and its handy turning area that swings into twin garages on the right. A gate painted Dulux Happy Days provides side access.

THE LAYOUT



the afternoon and the other has a city skyline view through the neighbouring gum trees. It's cool to know that children will be peering through those little windows for so many years to come."

Along with the generous sleeping quarters, the communal areas encourage year-round entertaining. The vast family room opens out to the deck, pool and yard area, ideal for hosting a crowd. Then in winter, the cosy den with its fireplace and bar area concealed behind blue joinery is the place to be.

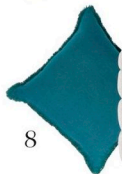
"It makes me feel so proud that we did something different," says Steven. "We trusted the design team and the result is a really amazing home that will provide many years of happiness to the new owners."

Kate Walker Design (KWD), Mount Martha, Victoria; katewalkerdesign.com.au. Cahill Building Group, Mornington, Victoria; cahillbg.com.au.



THE SOURCE

Sculptural furniture, industrial fixtures and timber accents are the cornerstones of a luxurious lakehouse style.



1 Monte Carlo **pendant light**, POA, Emac & Lawton. 2 Vanilla Lunebone **candle**, \$120, Greg Natale. 3 Milli **table lamp**, \$895, Coco Republic. 4 Greta **lounge chair**, POA, Triboca Bay Living. 5 Oxford **bath sconce** in Antique Burnished Brass, \$1089, The Montauk Lighting Co. 6 *Flamingo 3* limited-edition **art print** by Annelie Vandendael (103x83cm), \$2800, Studio Gallery. 7 Milli Mood Edit **twin-rail shower** in Brushed Gold, \$2195, Reece. 8 Australian House & Garden 'Boardwalk' linen frayed-edge **cushion** in Blue, \$59.95, Myer. 9 York **sofa**, \$6330, James Said. 10 Eggcup **stool**, \$795, Mark Tuckey. *For Where to Buy, see page 190.* H&G