

SLICE OF HEAVEN

A nature-inspired palette inside and a gorgeous enveloping garden outside make for a blissful home on Victoria's Mornington Peninsula.

STORY *Jackie Brygel* | STYLING *Julia Green* | PHOTOGRAPHY *Armelle Habib*



MAIN ENTRY The talents of architect Adrian Kucyk, builder KLS and landscape designer Steve Taylor of COS Design have resulted in a new build that appears to have snuggled into its site decades earlier. The exterior palette was kept deliberately simple and is topped off with standing seam Colorbond roof panels in Basalt.

“ONCE WE MADE THE DECISION TO REBUILD, THERE WAS NO TURNING BACK. IT’S THE BEST THING WE’VE EVER DONE.” Amanda, owner

LIVING/DINING The American oak coffee table and side table, along with the dining table in the background, were all handmade by 3D Windows. Hamilton sofas and knitted floor cushion, both Freedom. Taos pendant light, Manhattan rug, Turkish Tundra Grey limestone flooring (throughout) and benchtop, all KWD & Co. Bench base in Albedor ‘Thermofoam’ in White Grey Supermatt. Inizia dining chairs, Living By Design. Artworks by (on left wall) Studio Elwood and (on right wall) Marcia Priestley Art. Arabesque Deco sculpture on dining table, Love Tree Interiors. Wave platter, Kaz Morton Ceramics.

Paint colours are reproduced as accurately as printing processes allow.

THE PALETTE

Dulux White Cloak Half (exterior)	Porter’s Paints Long Island Grey	Dulux Snowy Mountains Quarter (interior walls and ceiling)
---	--	--

Every opportunity has been taken to connect the Mornington Peninsula home of Amanda and Darran to its natural surrounds. From its lush, secluded vistas to its airy living spaces unified by the use of raw and robust materials, there's a deep sense of serenity to the everyday sanctuary the couple share with their three teenage children.

For Amanda and Darran, it was paramount that the home sit comfortably within its pristine landscape. "We both grew up on the Mornington Peninsula," says Amanda. "It almost feels as though we're in the country here, since we're on about 4000 square metres with trees all around. Yet we can walk to the beach and the shops. It's the best of both worlds."

Nine years ago Amanda and Darran, who run their family-owned business 3D Windows, bought the large plot - which at

the time featured a small 1980s brick-veneer house. For seven years, the couple lived in that existing property with their children - Calum, now 18, Jacob, 17, and Ella, 13 - while never losing sight of their dream.

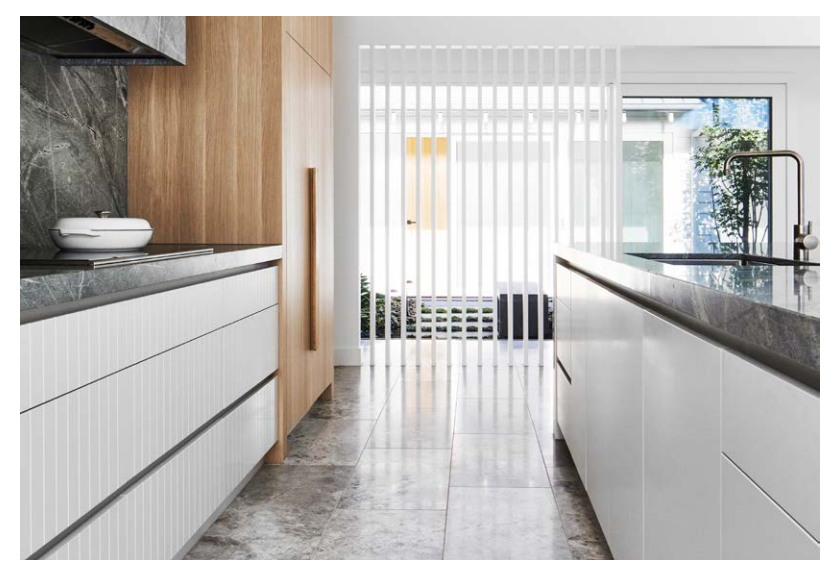
"We always knew that one day we would want to create our forever home," says Amanda. "Once we made the decision to knock down the house and rebuild, there was definitely no turning back. It's the best thing we've ever done."

Indeed, she and Darran had a clear vision of what they were hoping for when they enlisted the expertise of interior design studio KWD, along with architect Adrian Kucyk, builder KLS and landscape designer Steve Taylor of COS Design.

All involved were quick to embrace the design concept of a central garden courtyard that allows life-affirming daylight and greenery into the home. The result is just as intended, ►

LIVING Owners Amanda and Darran with children Ella, Jacob and Calum and white shepherds Nicki (left) and Marley. Terracotta vase on coffee table, Nadia Robertson Ceramics. Rust cushion, Tigger Hall Design.

KITCHEN Joinery made by 3D Windows with Evenex timber veneer in Clear Oak, Elton Group. Atlantic granite benchtop, island top, splashback and rangehood, KWD & Co. Sub-Zero 'Wolf' oven, Winning Appliances. Plywood barstools in Natural Oak, Coastal Living. Miami Vase vessel in middle of island benchtop by Ben David, Kas Australia. White speckled clay vase on right, House of Orange.





FAMILY ROOM When the temperature drops, everyone heads to the entertaining zone, which has a magnificent Cheminées Philippe wood-burning fireplace. Slouch sofa in Vintage Grey, Early Settler. Wicker armchairs and rug, both Freedom. Custom American oak coffee table, 3D Windows. U-shaped vessel by Clae Studio. Large pot by Alice Bell Ceramics. Artworks by Marcia Priestley Art. Cushions, Tigger Hall Design. Throw, Rose St Trading Co. White Polito wood oven in background, Mornington Garden Supplies. **COURTYARD** The main entry opens to views of a thriving, 13.7-metre-long courtyard garden flanked by (from left) the living/dining, the master suite and the bedrooms. ▶

“YOU HAVE A
SENSE OF BEING
SURROUNDED
BY GARDEN
EVERYWHERE
YOU LOOK.”

Kate Walker, interior designer



“EVEN ON A COLD BUT SUNNY WINTER’S DAY YOU COULD BELIEVE IT’S SUMMER OUTSIDE.” Kate Walker, interior designer



MAIN BEDROOM Bed and upholstered bedhead, both Bedshed. Italian loose-cover linen loveseat in Moss, Coastal Living. Custom American oak bedside table, 3D Windows. Blue Lagoon quilt, bedlinen and cushions, Greenhouse Interiors. Natural cotton Indonesian pendant light, Lighting Collective. Wye natural wool carpet in Smoke, KWD & Co. Vessels on bedside table by (from left) Formantics and Nadia Robertson Ceramics. Artwork by Marcia Priestley Art.

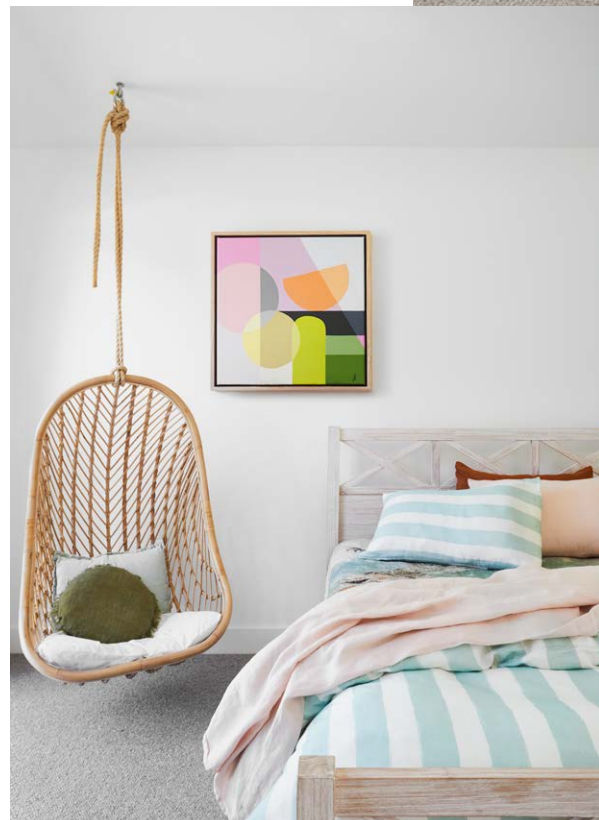
MAIN ENSUITE Grey Turkish Tundra limestone floor and wall tiles, and Atlantic granite for vanity, all KWD & Co. Evenex timber veneer in Clear Oak for vanity and cabinet, Elton Group. Bath bought at auction. Brodware bath filler in Brushed Nickel. Ollo pendant light, Creative Lighting Solutions. Towels, Købn and Loom Towels. Pot with plant by Alice Bell Ceramics. Terracotta vessel, Nadia Robertson Ceramics.



THIS IS THE LIFE
Victoria’s scenic Mornington Peninsula has been home to Amanda and Darran for most of their lives. They wouldn’t have it any other way, with their permanent base tantalisingly close to both bushland and sandy beaches despite being less than an hour-and-a-half’s drive from Melbourne. “We love the fact that it’s quieter, being away from the city,” says Amanda. “It’s a bit of a bubble here, and such a beautiful place for the kids to grow up.” ▶

H&G HOUSES

STUDY Desk by 3D Windows. Replica Wishbone chair, Provincial Home Living. Desk lamp, Greenhouse Interiors. Bench seat upholstery by Zoni Interiors. Wye wool carpet in Smoke, KWD & Co. Cushion, Greenhouse Interiors. Artwork by Tegan Franks. **ELLA'S BEDROOM** Ocean Grove bed, Snooze. Hanging chair, Uniqa Collections. Bedlinen, Greenhouse Interiors. Wye wool carpet in Dove, KWD & Co. Artwork by Anna Cole. **ELLA'S BATHROOM** Terrazzo floor tiles, Marina Gloss wall tiles in Light Blue and Atlantic granite vanity top, all KWD & Co. Vanity in Navurban 'The Oaks' veneer, New Age Veneers. Caroma 'Aura' bath, E&S. Tapware, Brodware. Towels, Loom Towels and Købn. Vessels by (from left) Formantics and Nadia Robertson Ceramics. **LAUNDRY** Opposite top Finger mosaic tiles, KWD & Co. Handles, MadeMeasure. Muuto felt basket, Huset. Towels, Købn. Artwork from Adairs. **MUDROOM** Opposite bottom Bench seat upholstery by Zoni Interiors. Cushion, Greenhouse Interiors. Baskets, Target.



in a house that balances open spaces and soaring ceilings with visually sensual finishes, relaxed furnishings and verdant views.

“The courtyard separates the adults’ and children’s wings, and you have a sense of being surrounded by garden everywhere you look,” says interior designer Kate Walker, KWD founder and director. “You open the big American oak front door and step from the garden into more garden. The home is bathed in sunlight, so that even on a cold but sunny winter’s day you could believe it’s summer outside.”

When it came to the base palette for the interiors, Kate employed a harmonious mix of luxe organic surfaces sourced from sister business, KWD & Co. “We love that Amanda and Darran came on the natural-material journey with us,” says Kate. “Everywhere you look in the home, you see KWD & Co’s Turkish Tundra limestone. Stone can have the visual feel of being quite cold, but actually, from a tactile point of view, it’s a very warm material. With all of the thermal energy that enters the home through the windows, the limestone feels lovely and warm underfoot and to the touch.”

Within the walls, timber highlights chime in, delivering both striking textural contrast and everyday functionality. “We layered the Turkish Tundra limestone with the warmth of timber and, for the kitchen benchtops, we specified a really dense material – Atlantic granite in a honed finish,” says Kate. “It adds a beautiful texture while being very hardy. Amanda really wanted cool greys throughout the home, and we added timber to create layers of texture and tone. It’s so fresh and crisp, and quite transformative, with a sense of being casual and family friendly with a holiday-like feel.”

Also imperative was that the entire house, while infused with a palpable sense of space and style, should be anything but precious for its active inhabitants. “Amanda was adamant that the materials had to be easy to clean and maintain,” says Kate. “They have two big dogs that like to spend time inside with the family (a couple of white shepherds named Nicki and Marley), so all of the materials used throughout the home had to fit this key part of the brief.”

As for Amanda and Darran, they couldn’t be more delighted with a house they have no plans to farewell. “We use every space in the home, but the main living area would be my favourite,” says Amanda. “It’s where we connect as a family and it has such a relaxing feel. I really can’t see us leaving here. We definitely have our forever home.”

► *KWD, Mount Martha, Victoria; (03) 5974 1800 or katewalkerdesign.com.au. Adrian Kucyk Design, Brighton, Victoria; 0417 399 498 or adriankucyk.com. KLS Built, Mount Martha, Victoria; 0413 313 665 or klsbuilt.com.au. COS Design, Camberwell, Victoria; cosdesign.com.au.*





EXTERIOR Nicki (left) and Marley burn off some energy. Window frames throughout are painted Dulux White Cloak Quarter. Spotted gum decking. Silver travertine paving around pool. Outdoor furniture, Cosh Living.



1 Vintage Ikea **lounger**, \$2902, 1stDibs. 2 Iså wool **rug** by Anna Carin (240x300cm), \$4680, Designer Rugs. 3 Moooi 'Meshmatics' wire mesh **pendant light**, from \$3615, Space. 4 Stone-composite **surface** in Black Tempal, from \$600/m², Caesarstone. 5 OB60SDPTDXI 60cm **pyrolytic oven**, \$4199, Fisher & Paykel. 6 New Paradise 'Skyfall' **mini brick tile** in Blue (40x140mm), \$309/m², Di Lorenzo Tiles. 7 SP01 'Thomas' ash **barstool**, from \$1645, Space. 8 Aspect **vase** in Natural, \$69.95, Freedom. 9 Tom Dixon 'Cloud' aluminium **bowl**, \$650, Manyara Home. 10 *Down By The Water Hole* **artwork** by Kate Pittas, \$440, Greenhouse Interiors. 11 littala 'Nappula' **plant pot**, \$179, Myer. 12 **Faux Monstera** in pot (100cm), \$149.95, Harvey Norman. 13 Felix **modular sofa**, from \$9977, King. *For Where to Buy, see page 190. H&G*



THE SOURCE

With a largely neutral colour palette, it's all about shape, texture and the odd bright splash.

12

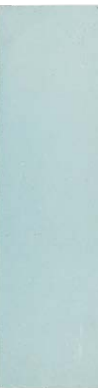


11

13



6



Produced by Saffron Sylvester.



10



8

9



7