



# contents

## May 2023

### the cut

- 11 OPENER** We shed light on a reinvented design classic
- 12 NEWS** The latest designs and finds you need to know about
- 15 TREND COLOUR** Why evergreen should always be seen
- 17 TREND STYLE** Puff pieces are popping up in every room
- 18 LAUNCH PARTY** We celebrated the release of our new book, *Modern Country Homes*, at James Richardson Furniture

### inside: homes & renovation

- 28 WALK IN THE PARK** Sydney architect Zoe Phillips moved into a dilapidated Edwardian home and set about remodelling it sensibly in stages over a few years
- 40 LICENCE TO CHILL** Victoria's Mount Martha has a new landmark — a towering tree poking through the roof of the spectacular Palm Springs-style home that Project 718 built
- 52 STARTING OVER** Interior designer Alison Lewis transformed her California bungalow into a funky family home furnished with key pieces from Fenton & Fenton

- 62 MAKE IT MID-CENTURY** The 1950s comes to Torquay in a renovation that focuses on timber, tiles, textural materials and total outdoor comfort
- 74 THE PAST MASTER** In Sydney, a small home is extended and updated with a contemporary fit-out that seamlessly incorporates restored period features
- 88 PEAK PERFORMANCE** A family of athletes sick of sharing one bathroom called on Branche Designs to save the day in super-quick time, with spectacular results
- 96 BATHROOM & LAUNDRY DESIGN SPECIAL** These two spaces can be life-altering when you get them right, so we've lined up the best contemporary looks and layouts plus plenty of tiles, appliances and more to buy right now
- 114 BATHROOM NEWS** Discover a home sauna contoured to the shape of your body, and a robe to pair it with
- 122 BUYER'S GUIDE** Washing machines, dryers and crinkle-combating steamers to suit all manner of settings, from Euro laundries to full wash rooms



# LICENCE TO CHILL



A CONTEMPORARY TAKE ON A PALM SPRINGS  
AESTHETIC ENSURED THE VIBE OF THIS  
VICTORIAN HOME WAS COOL AND RELAXED




## cheat sheet

**Who lives here** Couple Mark Godek and Brea Watts, co-directors of Project 718, a property-development company.

**Style of home** A mid-century-modern-style home with four bedrooms and an effortless flow from inside to out, where there's a Palm Springs-inspired garden.

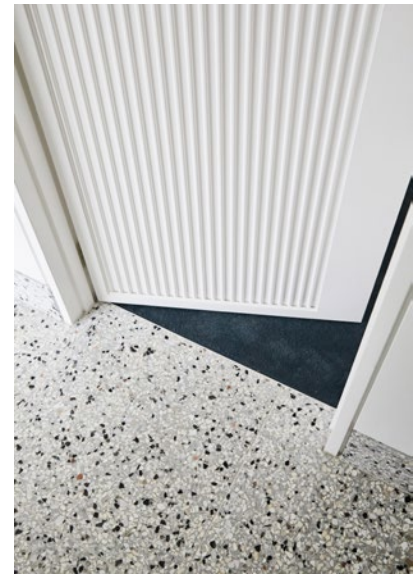
**Location** Mount Martha in Victoria, traditional land of the Bunurong people.

 The build took roughly 12 months, from October 2021 to October 2022.

**EXTERIOR** The home's design features a parapet roof structure and open carport typical of a classic Palm Springs house. Its crowning glory is the single palm tree poking through a cut-out in the steel roof. The brick structure is painted Dulux Snowy Mountains. Patterned breeze blocks, through KWD & Co, the finishes arm of Kate Walker Design.







**T**he appeal of a blank canvas to build their family home was too good for property developers Brea Watts and Mark Godek to pass up. After keeping a keen eye on the Mornington Peninsula market, a vacant block of land had caught their eye. “We are always keeping an eye on real estate and adore the region,” says Brea. “Mount Martha, in particular, has a special coastal-country feel about it. The beaches are stunning, and it has a small village of shops with everything you need. You always have that holiday feeling here. So, when this block came to our attention, it ticked all our boxes: walk to the beach and shops, as well as privacy when we’re home. We knew it was a winner!”

Situated in an idyllic location where rugged bushland meets glistening coastline, the vacant site was actually an extension of a neighbour’s garden before it came on the market. For their new build by Rod Hannah Design, Brea and Mark had one particular goal: to connect every room with the garden. To achieve this, both interior design firm Kate Walker Design (KWD) and landscape architect Colin Hyett Design worked together to ensure every aspect of the interior offered sightlines to the exterior. “The challenge was to ensure the space created as much accommodation as possible, while maintaining the focus on the landscape, which is so important for a Palm Springs aesthetic. Colin Hyett perfectly married the exterior with the interior,” says Kate Walker.

One undeniable feature of the garden is the 2.5-metre palm tree, craned into place and kept steady by the ‘avocado’ – a hole in the roof. “The idea came to life during the design process; we knew it fitted with the Palm Springs theme, but wanted a modern twist. Which is when we thought, why not bring it through the roof?,” explains Brea. “It was a huge day on site with the large trucks and towering cranes. This effort from Magnus Constructions definitely took a village, but wow, she’s spectacular and a highlight for the property. And the Kimpton Palm Tree, as we call it, is now a landmark in Mount Martha!”

At the heart of the home’s interior is the entertainer’s kitchen, complete with a 2.8-metre island bench that almost glides into

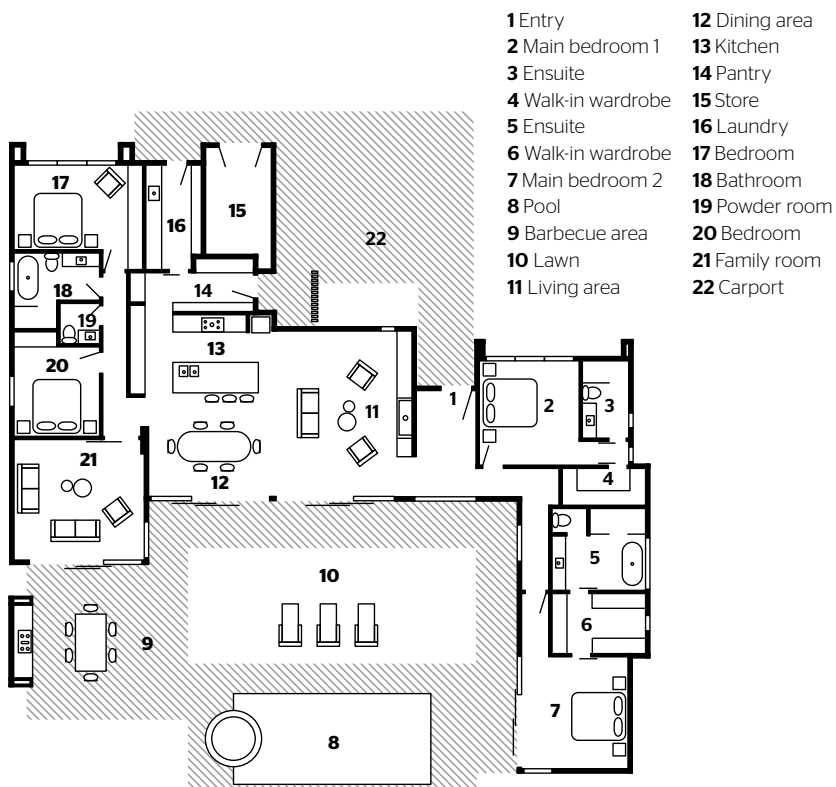




**LIVING AREA** (above) The ceiling height is 3.8 metres and the wall colour is a lighter version of the exterior white. Ligne Roset 'Plourn' high-back settee and De Sede DS-266 leather recliner chair, both Domo. CJ Anderson 'Big Friendly Single' armchair, Dowel Jones. Pebble coffee table, Made Studio. Cloud and Hex side tables, Criteria Collection. Khotan rug, Cadrys. Artwork on wall by Thierry B. Sculptural objects from House Of Orange, The Front Room Gallery, Tantri Mustika Ceramics, Pépité and Veronica George Gallery.

**ENTRY FOYER** (opposite) Looking straight through the house to the all-important pool and social hub. Internally, the skirting and flooring is Ghosted terrazzo, through KWD & Co. The side table to the left of the grass is by Dowel Jones. Niki dished timber pull on front door, Designer Doorware.





the living area. “The stone in the kitchen is so unique, it’s a piece of art,” says Brea. “It looks far better installed than when we viewed the specified selection at the stone supplier’s factory.” The expansive stacking doors that run the entire length of the kitchen allow for uninterrupted views straight out to the pool area, further emphasising the overall theme of the home.

Colour-wise, the basic scheme is white, with iconic shades of blue, pink and orange dropped into the palette. “Palm Springs brings a sleek, fresh feel to retro magic mid-century-modern with a light, bright, white colour palette,” says Kate. “The contemporary edge evolved from the materiality, with natural stone and terrazzo flooring, while the joinery design ensured the storage solutions suited the couple’s lifestyle.”

The home is gently separated into two wings – a parents’ section and a children’s section (for the couple or a future buyer) – with the living/kitchen area acting as a buffer in the middle. To give each wing its own identity while ensuring they remained linked, the two areas were brought together with colour. KWD designed the children’s wing to incorporate more blue tones; the adults’ wing features more of a pink palette. The terrazzo floors in each section’s bathroom provides a connection between the two areas via the use of both blue and pink tones. “Mark and I are especially overjoyed by the Pavlova terrazzo tiles in the main ensuite,” says Brea. “Originally, we were concerned that it might present as too pink, but once it was installed along with all the joinery and hardware, it looked absolutely amazing.

“The vibe and feel of the house is unmatched,” she adds. “Without a doubt, you feel 100% cooler being in our house – you just need a DJ, flares and a martini”. **10**

KWD is at [katewalkerdesign.com.au](http://katewalkerdesign.com.au) and [@katewalker\\_design](https://www.instagram.com/katewalker_design).

Colin Hyett can be contacted [@colin\\_hyett\\_design](https://www.instagram.com/colin_hyett_design).

Magnus Construction is at [magnusconstruction.com.au](http://magnusconstruction.com.au)





## LESSONS LEARNT

“An idea is just an idea  
until council approves it”

BREA WATTS, HOMEOWNER/DEVELOPER

“There was some discussion about having a rooftop bar and an open-sky cinema. Both would have been so cool but, unfortunately, council wouldn't approve them. Those two are definitely on our list for future projects though – stay tuned!”





**POOL AREA** The shaded entertaining zone is at the foot of the palm tree, overlooking the raised spa. A mixture of paving and soft grass gives the owners options for where to relax. Outdoor dining table and chairs, refurbished by White Picket Interiors. Wooden chair, Dowel Jones. Blue glass vase on outdoor dining table, Home Italia. J'ai Soif carafe and glass in Mint, Maison Balzac. Ava beach towel, Jordan. **DINING ZONE** (opposite) Nothing says Palm Springs like giant rocks, eye-catching cacti and a smart drinks trolley. Large bowls from The Front Room Gallery.





**MAIN BEDROOM** (this page and opposite top) Solution-dyed nylon carpet in a dark teal defines this space. Hana Baie Art fitted sheet, Greenhouse Interiors. Città twill cushion, RJ Living. Throw, stylist's own. Double Tier Cloud side table, Criteria Collection. Inka glass vase, Kiss With Style. Ceramics on long table, House Of Orange. Vase by Astrid Salomon. **CHILDREN'S BATHROOM** (opposite bottom) Zellige tiles in Dusty Blue add texture and interest to the walls. The marble is Elba blue. Porcelain vase, Pépité. Andalusia body wash, Saardé. **ENSUITE** (opposite right) More Elba marble with terrazzo walls. Vase, Brixton Street Pottery. Natch hand cleanser, Jardan.







## good news

Hydronic underfloor heating runs through the house, including carpeted areas. The owners also installed double-glazed windows and a water-friendly landscape irrigation system.



# GREAT FINDS



**1** *Abstract Series III* art print, \$24.95, Olive Et Oriel. **2** Until 'Areaware Kirby' vase, \$140, Hardtofind. **3** Dulux Wash&Wear acrylic paint in Galaxy Blue, \$108.50 per 4L, Bunnings. **4** Arch Black curved iron pendant light, \$999, Zest Lighting. **5** Meca ceramic tiles in Haze, \$139 per sq m, Perini. **6** Indian Revival Khotan rug (247cm x 317cm), \$10,500, Cadrys. **7** Terrazzo tile in Sierra Marshmallow, \$34.40 per tile, Perini. **8** Agatte white matt tile, \$42.96 per sq m, Beaumont Tiles. **9** De Sede 'DS-266 Recliner' chair, \$15,495, Domo. **10** Rose vase, \$170, Rubble Workshop. **11** Kuru bowl in Seville Orange, \$149, Iittala. **12** Ligne Roset 'Ploum' high-back settee, from \$12,075, Domo. **13** Elle criss-cross console, \$2250, Contents ID. **14** Strut dining chair, \$650, Fenton & Fenton. **15** Pegasi M square 160 sink mixer in Switzrok Matte White, \$640, Faucet Strommen. **16** Bari Ziperstein double-tier 'Cloud' side table, POA, Criteria Collection. **17** Gubi 'Pacha' lounge chair, from \$4335, Cult Design. **18** Chesapeake outdoor sunlounge, \$899, Harvey Norman. **19** Florence Stripe wheat bolster cushion, \$220, Bonnie and Neil.

ADDITIONAL PRODUCT SOURCING: NONCI NYONI





**POWDER ROOM** A deep blue colour called Dulux Kolya wraps around the walls. Concrete cylinder bowl/basin in Copan Blue, Nood Co. Scala floor-mounted basin mixer in Matt Blue. Ghosted terrazzo flooring, KWD & Co. Code Delta Kilo light. Natural Exfoliating hand & body bar, Hunter Lab.





## CULTURE FIT

If an at-home sauna is on your must-have list, you should check out Sauna Culture's aesthetically beautiful, superbly functional and simple-to-use options. The Baia sauna (left) features wavy seating which is mostly found in larger saunas, so it's a luxurious touch for a design that can fit into a smaller space. [saunaculture.com.au](http://saunaculture.com.au)



## shine on

Hunting for hair products that work wonders but also sit pretty on your shelf? Try Oribe's Hair Alchemy shampoo, \$52; serum, \$66; and mask, \$68. [roguebeauty.com.au](http://roguebeauty.com.au)



## stripe club

This 100% cotton unisex bath robe by Hommey is equally stylish and comfy. Choose from four striped colours, including the yummy Matcha one (left). [gethommey.com](http://gethommey.com)



## SMART SHOWER

Nail your shower's temperature and water flow instantly with the GROHE SmartControl Concealed Thermostat 3 Button in Square Chrome, \$1690. It uses push and turn technology, allowing you to intuitively control three different outlets for the perfect shower experience every time. [reece.com.au](http://reece.com.au)



## looking grate

Not many of us would give a grate a second thought, but apparently it can be a thing of beauty. Enter the Wave Grate by Stormtech, which gets the designer tick of approval. It's easy to clean, made to length and comes in a Silver, Brass/Gold or Satin Black finish (pictured above). [stormtech.com.au](http://stormtech.com.au)



## knock on wood

The new range of handmade timber joinery doors by Loughlin Furniture - two years in the making - has been more than worth the wait! There are seven profiles to choose from, including the timeless Open Weave Rattan style pictured here. [loughlinfurniture.com.au](http://loughlinfurniture.com.au)