



# SEA OF LOVE

THIS BEAUTIFULLY REINVIGORATED VICTORIAN SEASIDE HOME CONTINUES TO DELIGHT ITS OWNERS EVERY DAY  
*Story JACKIE BRYGEL Styling JULIA GREEN Photography ARMELLE HABIB*

**LIVING THE DREAM** Since deciding on an impulse 25 years ago to take the leap from Melbourne and move to Victoria's Mornington Peninsula, homeowners Lynne and Ron haven't looked back. Now their home has been given a stunning update by KWD, becoming the epitome of relaxed coastal-country style. The light-drenched living area is a treat. A bespoke Trapani silk rug by KWD anchors all, while swish swivel armchairs, also custom-designed by KWD, upholstered in Villa Textiles 'Fiskardo' fabric in Spice and brought to life by Sorrento Furniture, pack a punch. "It began with this rug," says Ron. "The rest of the room came together from that." At the entrance (opposite), family pooches Millie (left) and Mac welcome guests. >







**I**t was the day that altered the course of Lynne and Ron's lives, and one that proved the couple has every reason to trust their instincts. Inspecting an expansive plot of coastal pasture 25 years ago on Victoria's Mornington Peninsula as the spot for a holiday home, the empty-nesters instead conceived a sea change from Melbourne.

Before long, they had built their forever home on the magical site, nestled among glorious nature and with the sand and surf directly on its doorstep. Two-and-a-half decades later, the couple still count their blessings for carrying through with the "biggest one-minute decision" of their lives. "We've never regretted it in the slightest," says Ron.

Indeed, sharing the home with adored border collies Millie and Mac, these grandparents cannot imagine spending their days anywhere else. Their sanctuary certainly makes the most of its setting – and it now gleams again after a thorough, thoughtful rejuvenation by KWD.

"The house is only 100 metres from the beach, and we have a private track to the beach," says Ron. "When we bought the land, it was just pasture with not much in the way of birdlife, but since then we've planted in excess of 1000 native trees. We now have plenty of birdlife, as well as koalas and wallabies visiting us regularly."

Describing the home's original design as "a little beachy and a little farmhouse-ish", Lynne and Ron felt no necessity to make alterations or additions to the floor plan in any makeover. "The pinkish Gosford sandstone is as beautiful today as when we built the house," says Ron. However, they were ready to give it a new lease of life, courtesy of updated yet sympathetic fixtures, finishes and bespoke furnishings.

Enter KWD. "The overall aim," says KWD founder and director Kate Walker, "was to refresh the property. The home was quintessential 1990s and in excellent condition. They had spared no expense with the original concept that was architecturally designed, with cathedral vault ceilings, expansive windows to take in the view and a perfect position on the land in terms of sunlight and orientation."

Recruited on the recommendation of Working Dog Construction – the builder tasked with the renovation works – KWD's brief quickly expanded. "The project evolved from fixing some water damage to a full-scale renovation of every single room with the exception of two bathrooms – and it became a 12-month project," says Kate.

A priority was that the rejuvenation should embrace the existing architectural details and style. "We were sensitive to the original design because the owners had put a lot of love into every feature," says Kate, who chose a palette inspired by the pinks and oranges of the sandstone columns outside, the blues of the ocean nearby and the greens of the expansive lawn. "It was more about updating than major changes. We introduced furniture shapes inspired by the 1980s and 1990s into the custom-made pieces, to reflect the period of the home."

Lynne and Ron are delighted that their home once again brims with style, character and purpose. "We won't go anywhere – and neither will the dogs," says Lynne with a laugh. "They'll never let us move!"

**KITCHEN** Perfectly on point with Macaubas granite benchtops from Gladstones Granite and a sea of timber cabinetry in Dulux Natural White, the epicentre of the home is a true entertainer's delight. "The kitchen is radically different to what was here before," says Ron (pictured, opposite, top, with Lynne and their much-loved pooches). "The original area was lacking in bench space and had a walk-in pantry that was unsightly and took up a lot of room. It's now a lovely, open space." 'Neva Light' bar chairs by Artisan Furniture Australia flank the breakfast bar, while a gorgeous artwork by Katie Wyatt from Greenhouse Interiors claims the spotlight above the workbench. For similar floorboards, try the 'Smoked' boards from Royal Oak Floors' Architect Collection. **LIVING AREA** Stand-out pieces in this welcoming spot (opposite, top & bottom) include an Apparatus 'Triad 9' pendant light (try Criteria) that floats above a Cassina 'Rio' coffee table from Space. The custom KWD-designed sofas, upholstered in James Dunlop 'Brooklyn' fabric in Ink and by Sorrento Furniture, are set off by the watery hues of a Debbie McKenzie landscape. "We never intended to make a sea change," says Lynne. "We just got hooked straight away." >



STYLE ASSISTANTS JESSICA RETALLACK LISA HUNTER ACTUAL PAINT COLOUR MAY VARY ON APPLICATION



## THE PALETTE



From left to right: **FABRIC** 'Fiskardo' linen blend in Spice by Villa Textiles **FIREPLACE** Exposed stone surround  
**FABRIC** Threads 'Adler' linen in Indigo by Lee Jofa from Elliott Clarke **PAINT** Natural White by Dulux



**DINING AREA** Capitalising on its verdant vista, the open-plan living domain is blessed with space and style. In the dining zone, a striking Moooi 'Meshmatics' wire chandelier from Space casts a glow over Lynne and Ron's long-held timber table (for similar, try Connect Furniture) and revamped cane-backed dining chairs (the 'Nelson Bay' chair from Interiors Online is similar). Sculptural ceramics by Alice Bell from Greenhouse Interiors continue the curvature of the light above. **ENTRY** Earthy materials bring a pervading sense of depth and interest to the entrance (opposite), with its original terracotta-tiled flooring and Gosford sandstone walls. A curvaceous Douglas & Bec 'Arch' cane chair offers a prime spot to rest the feet. >

"IT'S A VERY COMFORTABLE  
 HOUSE. IT'S CERTAINLY  
 NOT FORMAL" ~ RON

ACTUAL PAINT COLOUR MAY VARY ON APPLICATION





## WE LOVE... *beautiful bedheads*

Upholstered headboards can be a textural triumph, instantly awarding a sleep zone serious style kudos. In the couple's guest bedroom, a bespoke fluted headboard, designed by KWD and made by Sorrento Furniture, showcases dazzling GP & J Baker 'Moro' linen in Blue. "The bedhead alters the entire room," says Lynne. Visit [sorrentofurniture.com.au](http://sorrentofurniture.com.au). >



**BATHROOM** Natural light streams into the family bathroom, grounded by the original terracotta-clad floor and walls. "In the new design, we worked to incorporate the areas of the home that had not been touched," says KWD's Kate Walker. "We wanted to ensure seamless connectivity, making the original parts of the home more relevant than before." **GUEST BEDROOM** A significant freshen-up has transformed this space (opposite), where a feature KWD-designed headboard takes centre stage and marries beautifully with Cultiver linen bed covers in Natural and a throw from Tiger Hall Design. A 'Latitude' rattan side table from The Family Love Tree and a custom ottoman in GP & J Baker 'Izora' linen in Teal complete the picture.



**ENSUITE** Swathed in soft shades of grey, Lynne and Ron’s luxe ensuite (right and below right) “underwent an amazing transformation”, says interior designer Kate Walker. “The materiality is beautiful.” Chateau marble lines the floor and vanity bench, and is an ideal counterpoint to walls in ‘Renga Aquamarine’ mosaic tiles – both were sourced by KWD. A Victoria + Albert ‘Vetralla 2’ freestanding bath (visit Harvey Norman) looks out to the treetops, with a Brodware ‘City Plus’ floor-mounted bath mixer (try Design Bathware).

**MAIN BEDROOM** Kate skilfully created comfortable luxury in Lynne and Ron’s room (opposite), where a considered palette of moody blues make a dramatic statement. “We’re not afraid of colour,” says Lynne. Featured are a Greenhouse Interiors ‘Aegean’ linen quilt cover, as well as a shapely ‘Worm’ armchair upholstered in Zepel ‘Courchevel’ velvet in Scuba (try James Dunlop Textiles) and a fluted bedhead in Threads ‘Adler’ linen in Indigo – both were designed by KWD and made by Sorrento Furniture. The pieces combine for a dreamy result. >

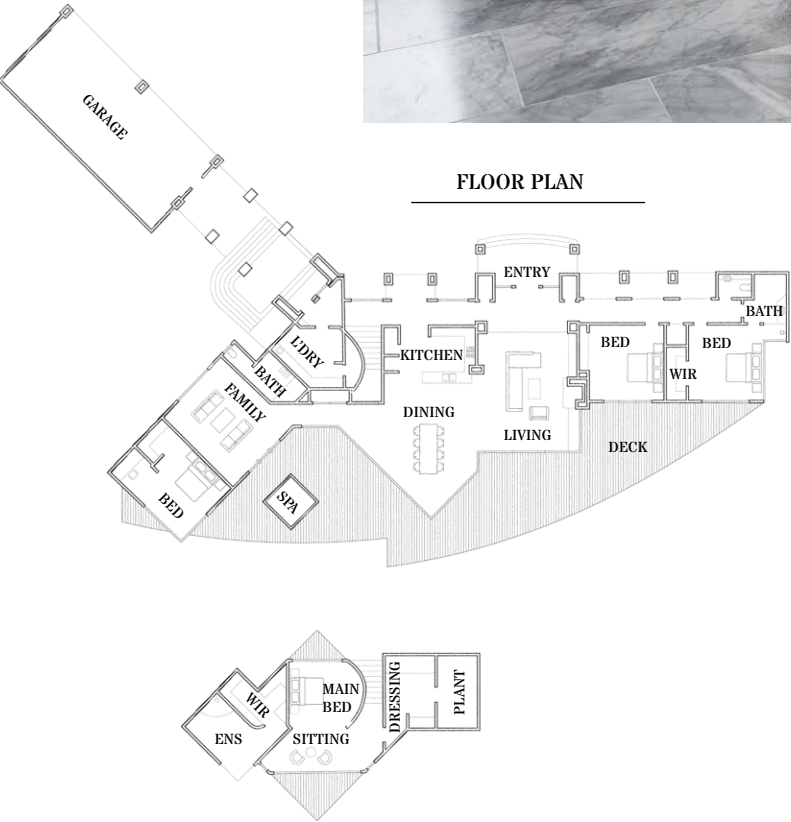


ILLUSTRATION KENZIEDESIGN.COM

“KATE, THE INTERIOR DESIGNER, RECOMMENDED ALL THE bedrooms HAVE AN UPHOLSTERED headboard, AND THEY TURNED OUT SO WELL” ~ RON





**DECK** From the merbau deck with postcard-perfect views of the water to the vast expanse of undulating lawn, Millie and Mac have plenty of room to roam. “It’s dog’s paradise here,” says Ron. “There’s so much space for them to run, and lots of birds to bark at, too!”

**SOURCE BOOK**  
**INTERIOR DESIGN**  
KWD, (03) 5974 1800,  
katewalkerdesign.com.au.  
**BUILDER**  
Working Dog Construction,  
(03) 5981 8052,  
wdconstruction.com.au.



SEA CHANGE

INSIDE STORY  
LYNNE & RON'S HOME

**WHO LIVES HERE?**  
*Lynne and Ron, both retired; plus their border collies Millie and Mac.*  
**WHAT'S YOUR FAVOURITE SPOT IN THE HOUSE?**  
*Lynne: “Our bedroom is just beautiful, but so is the lounge room.”*  
*Ron: “It’s a tough call!”*  
**WHAT'S YOUR FAVOURITE TIME OF THE YEAR IN THE HOME?**  
*Ron: “Summer, when the gum trees are flowering. But it’s also beautiful in the colder months.”*  
**IS THERE ANYTHING LEFT TO DO IN THE HOUSE?**  
*Lynne: “Nothing. It’s pretty much perfect.”*  
**ANY ADVICE TO OTHERS THINKING OF MAKING A SEA CHANGE?**  
*Ron: “Just do it! It’s fantastic.”*



- 1. The main bedroom is highlighted by a fluted upholstered bedhead in Threads ‘Adler’ linen in Indigo, designed by KWD.
- 2. The home’s facade makes a gracious first impression on visitors.
- 3. “It can easily sit 16 people,” says Ron of the massive table in the dining domain.
- 4. In the living area, a Cassina ‘Rio’ rattan-and-oak coffee table designed by Charlotte Perriand from Space.
- 5. A colourful artwork by Katie Wyatt from Greenhouse Interiors in the kitchen, with vessels by Lightly.
- 6. The sense of light and space is enhanced by a soaring cathedral ceiling.
- 7. During the renovation, the family bathroom remained largely untouched.

